

Wilderness House Literary Review 19/4

Matt Carrano

MATT CARRANO is a Boston-based artist who has participated in solo and group shows in and around the Boston area and internationally. The son of a portrait artist, Matt began drawing and traveling to art shows with his father as a child where he grew up in southern Connecticut. After completing college with a degree in electrical engineering and working for a number of years in the technology sector, he studied painting and drawing at the Cambridge Center Studio School, Massachusetts College of Art and Design (MassArt), and the Fine Arts Work Center in Provincetown, MA. He has had the privilege to study with several nationally known artists, including Gregory Gillespie, Paul Resika, Jake Berhot, Martin Mugar, Selina Trieff, Susan Kraut, and Sharon Yates.

Matt currently maintains a studio in Somerville, Massachusetts where he is an active member of a vibrant arts community. He is the founder and first president of Somerville Open Studios, a non-profit organization that gives established and emerging artists a chance to show and sell work through an annual citywide program and related events. Matt lives with his wife Carol Trager in Belmont, Massachusetts.



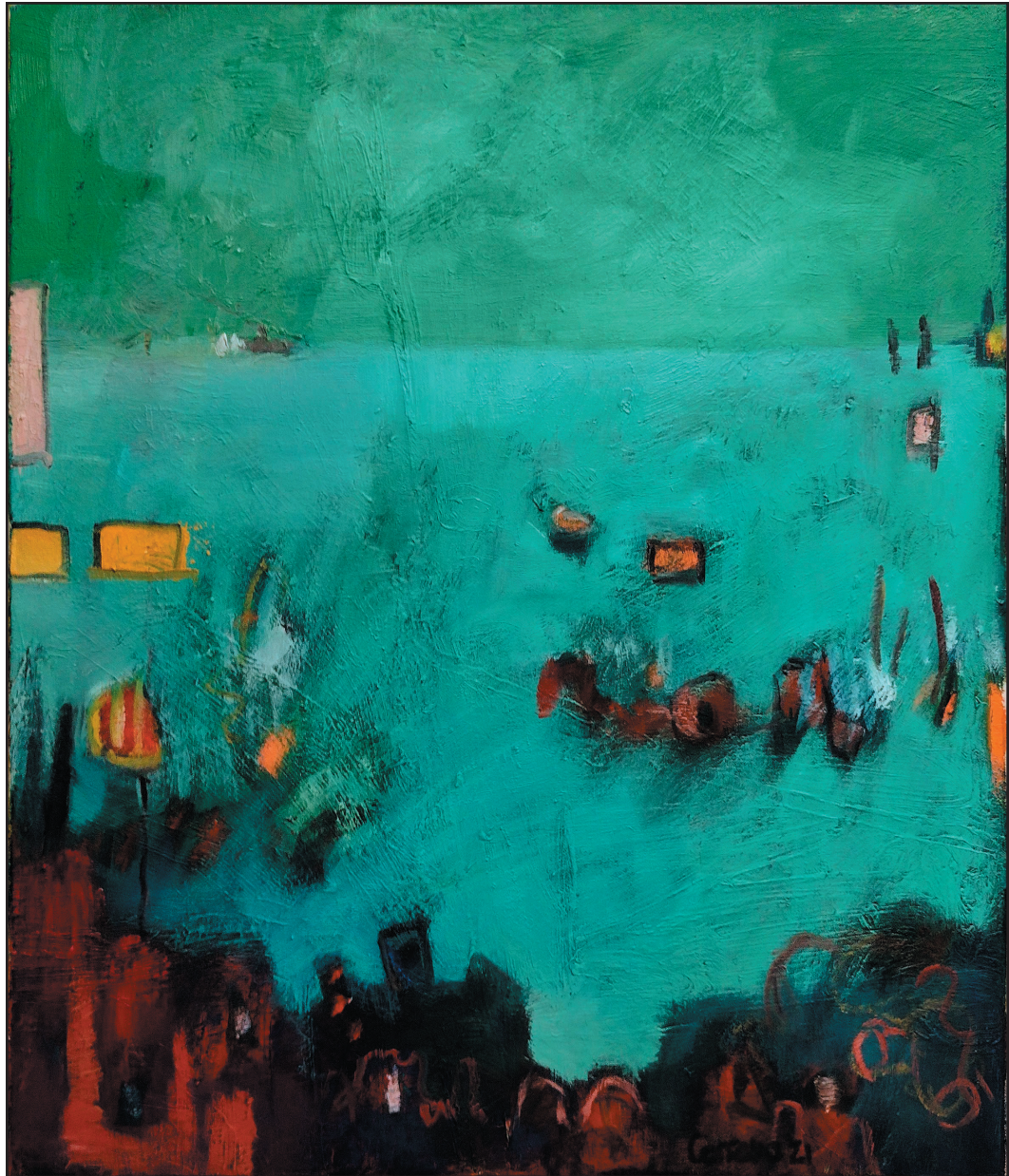
Artist Statement

My paintings depict landscapes real and invented. I am drawn to the landscape and use images of the land, sea, and the natural environment in my work. I think often of our connection to nature and how time is marked through the changing seasons.

All of these paintings were created in the studio and emerged through the process of painting. As I work, shapes and colors work together to suggest time and place. The emerging landscape gives meaning to abstract form. I don't work from photographs and none of these paintings are intended to represent a specific location or scene. However when they are successful, they evoke impressions and memories of places visited or imagined. Places that may be different for you and me. When I speak to people about my work, it's exciting to hear their stories and the impressions of places that the paintings evoke. I hope that they will stimulate similar thoughts and impressions for you.



Wetland, Oil on canvas, 36 x 30



Sea Foam, Oil on canvas, 24 x 24



Off the Banks – For Marsden Hartley, 30 x 30



Entropy, No. 2, Oil on canvas, 24 x 30



Beachcombers, Oil on panel, 14 x 11



Solitude, Oil on linen, 18 x 16



Equilibrium, Oil in linen, 20 x 24



Hope, Oil on linen, 20 x 16



Calm Harbor – Yellow Morning, Acrylic and collage on panel, 24 x 24



Calm Harbor – Pink Evening, Acrylic and collage on panel, 24 x 24



Green Mist, Acrylic and collage on panel, 16 x 16



The High Road, Acrylic and collage on panel, 16 x 16